



60 Holland Street, London  
SE1

GARTON JONES.COM



60 Holland Street, London  
, SE1

GARTON JONES.COM

9 Albert  
Embankment  
London  
SE1 7SP

Sales +44 (0) 20 7735 1888  
nineelms@gartonjones.com  
www.gartonjones.com

## £725,000 Leasehold

Discover an exceptional opportunity to acquire a stylish one-bedroom apartment within the prestigious Neo Bankside development, perfectly positioned beside the iconic Tate Modern in SE1.

This fantastic apartment spans a generous 587sq.ft (54.5sq.m), thoughtfully designed for modern living. The bright, open-plan kitchen and reception room is enhanced by striking floor-to-ceiling windows, bathing the space in natural light. Residents will appreciate the year-round comfort provided by comfort cooling and the practical benefit of excellent storage solutions throughout, including a large utility cupboard.

The property features a luxury bathroom suite with a separate shower. As a resident of Neo Bankside, you will benefit from world-class amenities, including a 24-hour concierge service and access to an exclusive Residents' Gymnasium. The development also offers a business centre and bike club, with an on-site Co-Op for added convenience.

Situated moments from the vibrant banks of the River Thames, this location truly captures the buzz of London's trendiest cultural quarter. Enjoy immediate access to some of the city's most famous landmarks, top-tier restaurants, and unique boutiques. Excellent transport links are on your doorstep, with Blackfriars Station just 0.2 miles away, ensuring seamless connectivity across London. This apartment offers an ideal blend of sophisticated living and a prime, sought-after SE1 address.

Please note furniture may differ to that shown in the current photos.

- Leasehold: 981 Years Remaining (999 years from 25 December 2007)
- Service Charges: £7,500 per annum (payable half-annually)
- Ground Rent: £400 per annum (payable annually)

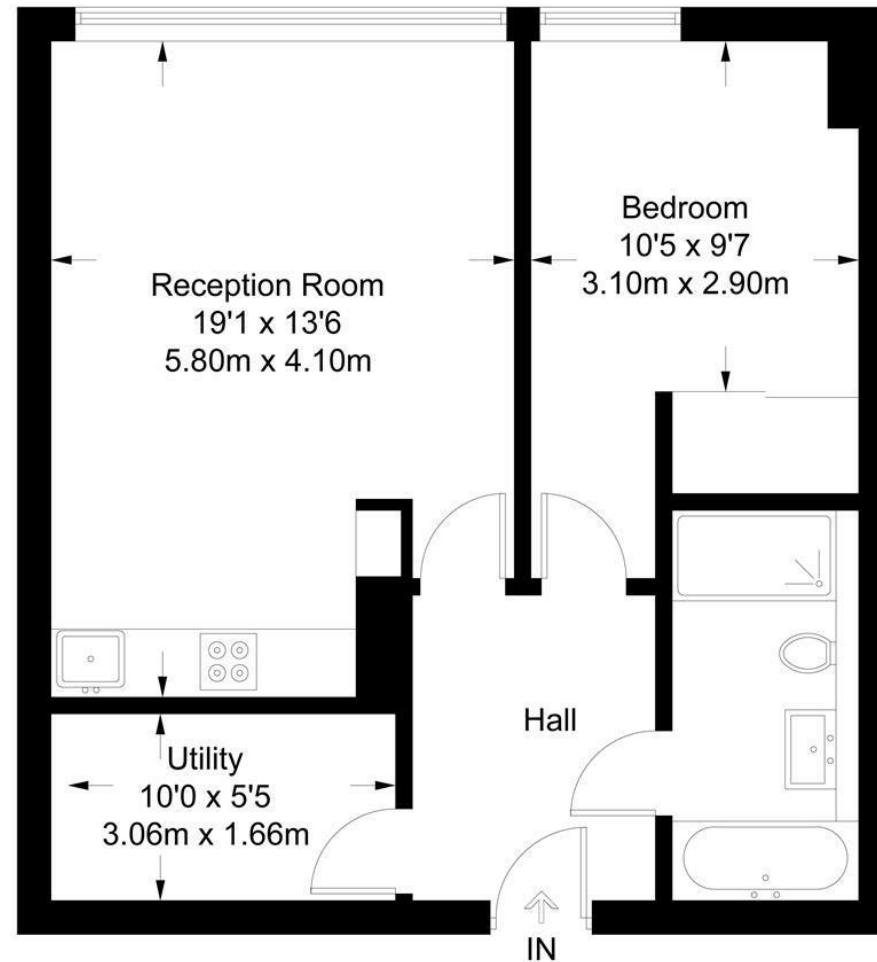
- 1 Bedroom
- 587sq.ft (54.5sq.m)
- Open Plan Kitchen
- Floor-to-Ceiling Windows
- Comfort Cooling
- Good Storage
- 24 Hour Concierge
- Residents Gym
- Next to Tate Modern
- 0.2 Miles to Blackfriars Station



EPC certificate available on request.

## Neo Bankside

Approximate Gross Internal Area = 587 sq ft / 54.5 sq m



## Fifth Floor

Not to scale, for guidance only and must not be relied upon as a statement of fact.  
All measurements and areas are approximate only and have been prepared in accordance with the current edition of the RICS Code of Measuring Practice.



